



Annex

— LIFE CARE PVT. LTD. —

✉ annexlifecare@gmail.com

🌐 www.annexlifecare.com



ORTHO CARE

Ingredients

- ▶ Salai Gugul Ext.
- ▶ Malkangni Ext
- ▶ Hadjod Ext.
- ▶ Nirgundi Ext.
- ▶ Rasana Ext
- ▶ Haldi Ext.
- ▶ Ashwagandha Ext.
- ▶ Aloevera Ras
- ▶ Methi Ext.



Key Benefits

- ▶ Help in Pain due to Gastric disorders.
- ▶ Useful in Joint Pain.
- ▶ Help in Rheumatoid Pain.
- ▶ It accelerates the smooth functioning of joints.
- ▶ It strengthens bones and Lubricants the human joint portions.
- ▶ It Reduce Pain and stiffness in the muscles of fingers, back, wrist, elbows, Knee, ankles etc.
- ▶ Help in improving the mobility and flexibility of joints.

Direction for usage:

20-30 ml Twice Daily before meal or as directed by physician/Dierician





MULTI BERRY

Ingredients

- ▶ Acai Berry
- ▶ Cran Barry
- ▶ Cloud Barry
- ▶ Lingon Barry
- ▶ Salmon Barry
- ▶ Huckle Barry
- ▶ Bule Berry
- ▶ Chock Barry
- ▶ Cran Barry
- ▶ Rasp Barry
- ▶ Rad Multibarry
- ▶ Hawthorn Barry
- ▶ Himalayan Black Berry
- ▶ Black Roas Barry
- ▶ Himalayan Goji Berry
- ▶ Boysen Berry
- ▶ Goose Berry
- ▶ Strawberry

Key Benefits

- ▶ Prevent Cells & tissues against damages.
- ▶ Major cold & flu relief & Natural Laxative.
- ▶ Hold Prevent Cancer causing agent & Boost Immunity.
- ▶ Memory boosting & maintains Eye health.
- ▶ Maintains cardiovascular Health.
- ▶ Healthy Tissues & Blood Vessels.
- ▶ Reduces the risk of anemia
- ▶ Rich in nutrients & promote Digestion

Direction for usage:

Consume 15-30ml Daily twice a day with cold milk/water or as directed by the Physician





DAIBOCARE

Ingredients

- ▶ Neem (Azadirachta Indica)
- ▶ Karela (Momordica Charantia)
- ▶ Jamun (Eugenia Jambolana)



Key Benefits

- ▶ Jamun is a delicious fruit and is rich source of Vitamin A & C with low Calories.
- ▶ Karela is a unique fruit which has very low calories & corners with numerous health benefits.
- ▶ Neem has an antioxidant properties which clears your pimple and purifies your blood.

ALOEVERA

with Guava



Ingredients

- ▶ Pure Aloe vera Juice with pulp
- ▶ Permitted Class II Preservatives
- ▶ Critic Acid
- ▶ Dietary Fibre

Key Benefits

- ▶ Helps Repair Dead skin cells, providing a Natural, health glow to skin and hair.
- ▶ Micro-nutrients help in resisting illness and boosting immunity.
- ▶ Break down sugar and fats, helping indigestion and avoiding hyper acidity.
- ▶ Helps reduce fat content and improves muscle tone.
- ▶ Supports liver health and removes impurities from the bloodstream.



Direction for usage:

add 30 ml Juice using the measuring cap to 30ml water. Consume twice a day before a meal For best results, complete at least 2 Bottles.

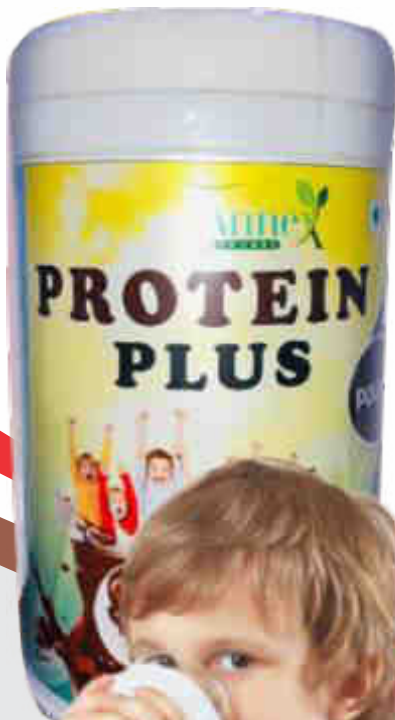




PROTEIN PLUS

Ingredients

- ▶ Protein Isolate
- ▶ Soy Lecithin
- ▶ Methionine
- ▶ Phenylalanine
- ▶ Iron
- ▶ Silicone Dioxide
- ▶ Isoleucine
- ▶ Histidine
- ▶ Lecine
- ▶ Milk protein concentrate
- ▶ Threonine
- ▶ Calcium
- ▶ L'Lysine
- ▶ Tryptop



Key Benefits

Protein Plus is a unique 100% Protein which may Provide a natural, low fat protein with the added benefits of naturally occurring soy iso-flavour calcium and iron.

Direction for usage:

Protein can be mixed a with variety of food items like Cereals & Breads.





LADY CARE

Ingredients

- ▶ Ashwagandha
- ▶ Amla
- ▶ Acidity regulators
- ▶ Satavari
- ▶ Aloevera
- ▶ Noni
- ▶ Jatmansi



Key Benefits

Menstrual periods with irregular menstrual pain, physical mental weakness, white watering is helpful in getting the cancerous lumps of women of childbirth.

Direction for usage:

Half hour before meal / 2 hours after meal. Take 5 ml twice daily in 150 ml water for 3 days. Next 3 Days take 10 ml daily in 250 to 300 ml water. From 7th day take 15-30 ml twice daily in water as per need.





MANTONE

Ingredients

- ▶ Shilajit
- ▶ Black Musli
- ▶ Gokhru
- ▶ Jayfal
- ▶ White Musli
- ▶ Ashwagandha
- ▶ Koch Seeds

Key Benefits

- ▶ Release stress and boost energy.
- ▶ Improve Sperm Count, Quality, Motility and Libido.
- ▶ Regulate male and female hormonal system.
- ▶ Improve vitality and fertility support function of vital organs for mind & body.



Direction for usage:

Adults : 15-30 ml Twice a day 1 hours before food with water



MULTI NONI

Ingredients

- ▶ Noni (Morinda Citrifolia)
- ▶ Gracinia Camobogia
- ▶ Ashwagandha
- ▶ Amla (Indian Gooseberry)
- ▶ Alovera
- ▶ Grape Seed Extract
- ▶ Acidity Regular



Key Benefits

- ▶ Detoxifies the body
- ▶ Relieves constipation.
- ▶ Purifies blood, Enhances Concentration.
- ▶ An Effective Anti-Oxidanta.
- ▶ Improve Diegestion
- ▶ Regulates immune system

Direction for usage:

Adults : Drink 15-30 ml, Twice a day an empty stomach.





LIVER CARE

Ingredients

- ▶ Amltas
- ▶ Brinraj
- ▶ Kalmegh
- ▶ Makoy
- ▶ Sarpunkha
- ▶ Arjun
- ▶ Daru Haldi
- ▶ Kasani Seeds
- ▶ Mulethi
- ▶ Triphla
- ▶ Bhumi Amla
- ▶ Giloy
- ▶ Kutki
- ▶ Punar Nava



Key Benefits

- ▶ Restore the liver function parameters.
- ▶ Checks degeneration and promotes
- ▶ Regeneration of liver cells
- ▶ Boost immune system.
- ▶ Detoxification the liver thereby improving liver dysfunction.



FAT GO

Ingredients

- ▶ Green Coffee Ext.
- ▶ Green Tea Ext.
- ▶ Garcenia Cambogia Ext.
- ▶ Guduchi Ext.
- ▶ Moringa Ext.
- ▶ Carrot Ext.
- ▶ Amlaki Ext.
- ▶ Haritaki Ext.
- ▶ Bahera Ext.

Key Benefits

- ▶ Boost Metabolism
- ▶ Help Burn Fat
- ▶ Boost Energy
- ▶ Help in Appetite Suppress



Direction for usage:

Take 1 cap twice Daily with luke water or an empty stomach at list half an hour before meal or as directed by your health care professional



DIABETIC CARE

Ingredients

- ▶ Ashwagandha Ext.
- ▶ Seabakthorn Ext.
- ▶ Astragalus Ext.
- ▶ Alfalfa Ext.
- ▶ Guduch Ext.
- ▶ Amlaki Ext.
- ▶ Haritaki Ext.
- ▶ Neem Ext.
- ▶ Punarnava Ext.
- ▶ Kutki Ext.
- ▶ Trikatu Ext.
- ▶ Wheatgrass Ext.
- ▶ Jayphal Ext.
- ▶ Gurmar Ext.
- ▶ Vijaysaar Ext.
- ▶ Jamun Guthli Ext.
- ▶ Curry Leaf Ext.
- ▶ Spirulina Ext.

Key Benefits

- ▶ Support Cravings & Anti Diabetic
- ▶ Support Insulin Production
- ▶ Control Obesity



Direction for usage:

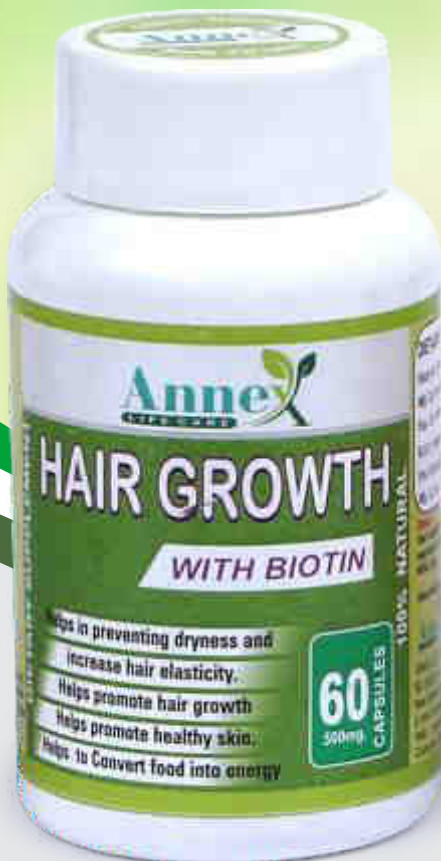
Take 1 cap twice Daily with luke water or an empty stomach at list half an hour before meal or as directed by your health care professional



HAIR GROWTH

Ingredients

- ▶ Wheatgrass Ext.
- ▶ Carrot Ext.
- ▶ Beatroot Ext.
- ▶ Amla Ext.
- ▶ Spirulina Ext.
- ▶ Seabathorn Ext.
- ▶ Green Tea Ext.
- ▶ Noni Ext.
- ▶ Haritika Ext.
- ▶ Moringa Ext.
- ▶ Ganoderma
- ▶ Mulethi
- ▶ Jatamansi
- ▶ Alovera



Key Benefits

- ▶ Helps in preventing dryness and increase hair elasticity.
- ▶ Helps promote hair growth
Helps promote healthy skin.
- ▶ Helps to Convert food into energy

Direction for usage:

Take 1 cap Morning & 1 in the evening with water at meal time or as directed by your health care professional





MEN TONE

Ingredients

- ▶ Shilajit Ext.
- ▶ Ashwagandha Ext.
- ▶ Kauch Beej Ext.
- ▶ Salam Panja Ext.
- ▶ Satavari Ext.
- ▶ Vidari Khand Ext.
- ▶ Amla Ext.
- ▶ Haritika Ext.
- ▶ Punarnava Ext.
- ▶ Seabakthorn Ext.
- ▶ Spirullina Ext.
- ▶ Swet Musli Ext.
- ▶ Jayphal Ext.
- ▶ Shivlingi Seed Ext.



Key Benefits

- ▶ Release stress and boost energy.
- ▶ Improve Sperm Count, Quality, Motility and Libido.
- ▶ Regulate male and female hormonal system.
- ▶ Improve vitality and fertility support function of vital organs for mind & body.

Direction for usage:

Take 1 cap Twice daily with luke warm Milk After meal or as directed by your health care professional



DAILY PLUS

Ingredients

- ▶ Giloy
- ▶ Amlaki
- ▶ Tulsi
- ▶ Haritika
- ▶ Kaalmegh
- ▶ Punarnava Ext.
- ▶ Ashwagansha Ext.
- ▶ Bahera Ext.



Key Benefits

- ▶ Boost Immunity
- ▶ Control Fever & Flu
- ▶ Help to Protect Virus
- ▶ Help to care Skin Allergy
- ▶ Help to maintain Sugar Level

Direction for usage:

Take 3 cap in a day before meal with Luke warm water or as directed by your health care professional





GARCINIA CAMBOGIA

Ingredients

- ▶ Garcinia Cambogia Ext..



Key Benefits

- ▶ Increase Metabolism & Fatigue
- ▶ It Blocks Your Body's Ability to Make Fat
- ▶ Maintain Normal Blood Sugar & Cholesterol Levels

Direction for usage:

Take 1 cap twice Daily with luke water or an empty stomach at list half an hour before meal or as directed by your health care professional

Cleansing Bar

Key Benefits

- ▶ Aloe Vera Gel (Aloe Barbadensis),
- ▶ Glycerin, Essential Oil,
- ▶ Cleansing Bar Base Q.S.



Usage : Hand made Ayurvedic Cleansing Bar for external use only.





MAXODENT

HERBAL DENTAL CREAM

Ingredients

- ▶ Babool Chhal (Acacia Arabica) Bark
- ▶ Mulhethi (Glycyrrhiza Glabra) Roots
- ▶ Lawang (Syzygium Aromaticum) Bud
- ▶ Pudina Sat (Manthaspikata) WP
- ▶ Kapoor (Cinnamoum Camphora) WR
- ▶ Haldi (Curcuma Longa) Rhizome
- ▶ Tomar (Zanthoxylum Alatum) Seed
- ▶ Pilu (Salvadora Persico) WP



DIRECTION FOR USE

Apply on Teeth with Tooth Brush gently
twice a day or as directed by the physician.



TULSI DROP

Ingredients

- ▶ Tulsi (Divya Rus).
- ▶ Contains approved Class II Preservatives,
- ▶ No added sugar,
- ▶ Vitamins & Minerrals.

Key Benefits

Tulsi (Divya Rus) is very effective in cough, cold, acidity, constipation, stomach & abdominal pain, viral or seasonal fever, swelling in lungs, hypertension, chest congestion, fatigue, vomiting, obesity, arthritic, asthma, anemia & ulcer. It Keeps away the deadly fevers like dengue, malaria and swine flue etc. It is very helpful in controlling diabetes. It has anti-bacterial and Anti-viral Action.





AYU ALOE

HERB CREAM

Ingredients

- ▶ Aloe vera Ras
- ▶ Acucumber Rus

Key Benefits

- ▶ It Prevents and cures skin infections and reduces skin inflammation.
- ▶ it controls acne and pimples
- ▶ It revives dark, dry and damaged skin.
- ▶ It nourishes the skin and improving its texture and tone.





AYU VIZO

HERB CREAM

Ingredients

- ▶ Aloe vera Ras
- ▶ Almond Oil
- ▶ Olive Oil
- ▶ Haldi
- ▶ Weat Germ Oil

Key Benefits

- ▶ It Prevents and cures skin infections and reduces skin inflammation.
- ▶ It controls acne and pimples
- ▶ It revives dark, dry and damaged skin.
- ▶ It nourishes the skin and improving its texture and tone.





AYU HERBAL

Hair Oil

Ingredients

- ▶ Amla
- ▶ Bhringraj
- ▶ Shikaki
- ▶ Brahni
- ▶ Neem
- ▶ Mehandi

Key Benefits

- ▶ It provides natural goodness to hair.
- ▶ It helps in preventing hair loss.
- ▶ It reinvigorates hair tissues.
- ▶ A thorough massage with such herbal hair oil
- ▶ boos blood circulation in the scalp and
- ▶ strengthens hair.
- ▶ It contains some rare fatty acids which makes
- ▶ them shinny.
- ▶ It treats hair problems like thinning of hair and
- ▶ dry flaky scalp.



DIRECTION FOR USE

Apply the oil over scalp & Roots of Hair



Gooodday

Extra Care Antibacterial with Wings

- High Absorb
- Super Soft
- Light Weight

14 PADS
With WINGS

Antibacterial
Anion Chip



100%
Chemical Free
& Breathable
Cotton



Description: Annex Fragrances dhoop Cones made from high quality essential oil, herbs and natural powders for giving long last and natural atmosphere. It creates a refreshing and alluring environment and eliminates all the negative and destructive energy.

Dhoop Cones



Incense
Dhoop Cones



AnneX
LIFECARE



AnneX

LIQUID

DISHWASHER





AnneX

Liquid Detergent

5 in 1
Fabric Care

- Washing
- Softening
- Brightening
- Superior Fragrance
- Colour Care

5 in 1 liquid detergent softer on clothes with no clumps & residues



AnneX



99.9% Germs Kills

Sone Sa Khata
Vishvas se Bhatta

Annex GOLD PLUS

Super Clean Formula



Thank
You



AnneX
— LIFE CARE PVT. LTD. —

✉ annexlifecare@gmail.com

🌐 www.annexlifecare.com